



Board of Education

Bryan Burrell - President

Claudette Clark - Vice President

Amy Appelbaum - Secretary

Claudette Jimerson

Thomas LaColla

Michael Lagana

Michael Mark

Brittany Graff - Student Representative

Instructional Budget Presentation 2009-2010

Dr. Valencia F. Douglas,
Superintendent

Presented by

Walter Woodhouse

Assistant Superintendent for Instruction

Gina Cappiello

Director of Curriculum & Professional
Development



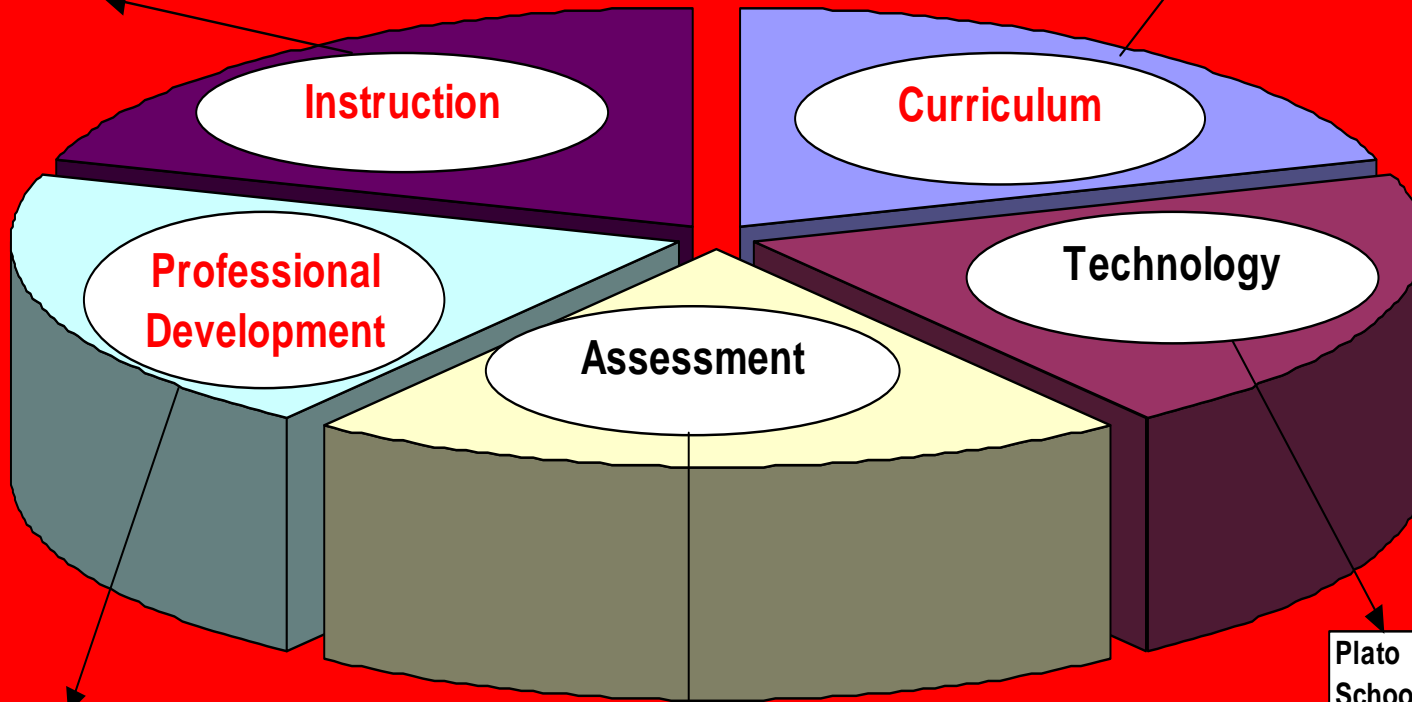
The budget supports student learning by:

- Providing strong academic instruction
- Creating new educational programs to meet student learning needs, e.g., Robotics, Virtual High School, Project Connect
- Supporting challenging courses and program services, including after school programs at all levels
- Differentiating instruction to meet the needs of academically and culturally diverse learners
- Continuing professional development for staff
- Continuing to improve teaching and supervision based on the Charlotte Danielson Model for enhancing professional practice and evaluation

STUDENT LEARNING

Data Analysis
Differentiation
Reading & Writing in the Content Areas
Socratic Seminar
Inquiry Based Learning

Backwards Design
Essential Questions
Enduring Ideas
Curriculum Mapping



- 1
- 2
- 3
- 4
- 5

New Teacher Induction
Annual Professional Performance Review Plan
Workshops
In-Service Training

State Testing
Common Assessments
Formative Assessments
Summative Assessments

Plato
School Island
Channel 13 Streaming
Schedule Pro
Web Sites
My Learning Plan
Rubicon Atlas



The budget supports scholastic excellence, cultural appreciation and ethical behavior

The Nyack School District:

- Has been recognized by New York State as a High Achieving/Gap Closing District for three consecutive years
- Has been recognized nationally for its award winning musical performing groups
- Exhibitions of student art work in professional art galleries
- Has consistently produced high quality musical and dramatic theatre productions
- Has multiple community service opportunities for students (K-12)
- Bullying Prevention program (K-8)



Academic Success

Elementary Results Grades 3-5

- 83% of students scored Level 3 or 4 on NYS ELA 2008
- 91% of students scored Level 3 or 4 on NYS Math 2008

Middle School Results Grades 6-8

- NYS High Achieving/Gap Closing Middle School for the past two years
- 78% of students scored Level 3 or 4 on NYS ELA 2008
- 79% of students scored Level 3 or 4 on NYS Math 2008



Academic Success

High School

- NYS High Achieving/Gap Closing High School three years in a row.
- 93% of the Class of 2008 went on to higher education.
- More students are taking regents exams, scores are higher and achievement gaps are being reduced.
- SAT mean scores: Verbal 541 (39 points above NY State & the nation); Math 545 (41 points above NY State & 30 points above the nation)
- Increase in total the number of Advanced Placement Exams administered from 185 (2005) to 291 (2008) – a 13.5% increase – combined with an increase in the number of scores between 3-5 on A.P. Exams from 220 (2005) to 374 (2008) – a 70% increase.
- More special education students are meeting the graduation requirements by passing Regents examinations.

Academic Success



Class of 2008

College bound June graduates:

93%

White: 98%

Black: 91%

Hispanic: 64%

Asian/Pacific Islander: 100%

Purposes of Instructional Initiatives

- To revise or modify the curriculum for existing courses
- To create curriculum for new courses
- To better align curriculum, texts and learning materials to state standards and assessments
- To better prepare all of our students to meet greater academic challenges
- To provide options for students in their courses of study
- To support music and fine arts education
- To provide professional development that is directly linked to greater student achievement

Program Changes

- CLASSRANK

For students entering grade 9 in September, 2009 or later, Honors courses will receive a weighting of 3 points, Advanced Placement courses 5 points and Regents courses will not be weighted for the purposes of calculating the cumulative grade point average

NEW COURSES:

- Integrated Science Grade 7
- Botany/Horticulture- HS
- Interdisciplinary Science HS
- AP Psychology
- Printmaking

Elementary



- Elementary Social Studies K-5 Curriculum Writing on Rubicon
- Online ELA & Social Studies resources
- Social Studies materials-funds to support enrollment shifts
- Reading A-Z and RAZ Kids Online Resources

Business

Curriculum Writing:

- Entrepreneurship
- Business Law



LOTE



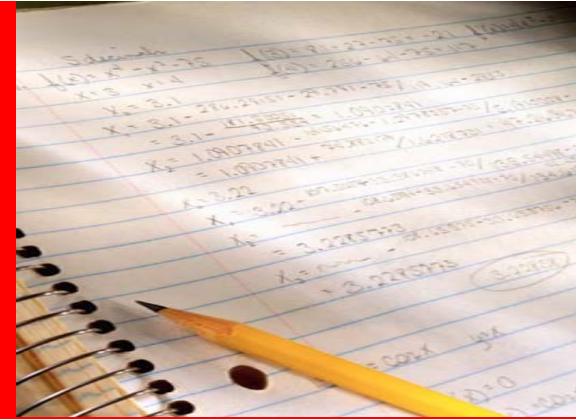
- Text Adoption for French and Spanish Grade 6
- Text Adoption for Spanish Grade 7

Mathematics

Curriculum Writing

- Grade 6
- Algebra & H
- Geometry
- Algebra II

Calculators for MS & HS



Science



- Grade 7 Integrated Science (new course)
 - Curriculum Writing and Text Adoption
- Botany/Horticulture (new course)
 - Texts, Curriculum Writing and Professional Development
- HS Interdisciplinary Science (new course)
 - Curriculum Writing and Materials
- Authentic Science Research-
 - Curriculum Writing and Professional Development

Social Studies



- Global History text Adoption ~ Year 2
- AP Psychology (new course) ~ Text Adoption & Materials
- Online Map Resources (MS & HS)
- Sojourn to the Past

Library

- Curriculum Writing K-12



District - Wide

- P.D. 360 Online Professional Development Videos - 40 licenses

Summer Programs

- Sixth Grade Summer School
- Raise Our Sights ~ Middle School
- Nyack Academy ~ High School



Professional Development

- ◆ Integration of technology into instruction
- ◆ Data analysis to inform and differentiate instruction
- ◆ Diversity awareness
- ◆ Leadership support for administrators
- ◆ Continued Professional Development towards successful implementation of the revised secondary math curriculum
- ◆ External consultants to support professional development plans

Professional Development

- Comprehensive Special Education Staff Development
 - Coaching for collaborative teams
 - Training on supervision of collaborative teams
 - Providing professional development for special education teachers in Therapeutic Crisis Intervention and Applied Behavioral Analysis
- Continued training on Rubicon Atlas
- Ongoing orientation and 3-year induction program for teachers new to Nyack including a mentor program